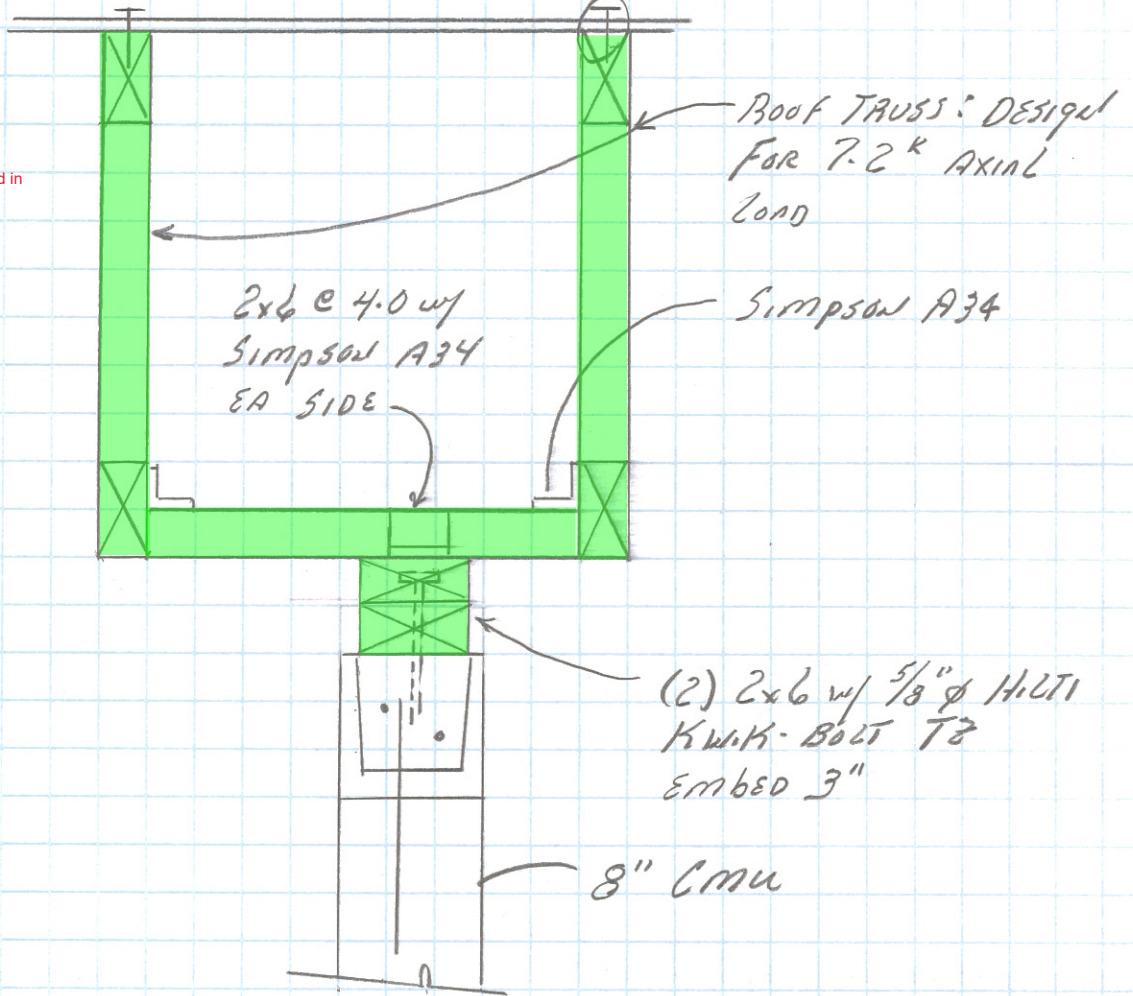


Job Name: HEARD COUNTY FIRE STATION
Job # 223530 Sheet # 1/2
Designer: JMJ Date: 4-9-24

$\frac{5}{8}$ STRUCT 1 PLYWOOD w/ 10d NAILS
C 6" @ PANEL EDGE & 12" @ IN FIELD

Note: Features of detail highlighted in green are required to be fire rated when partition below is fire rated.



SECTION A-A