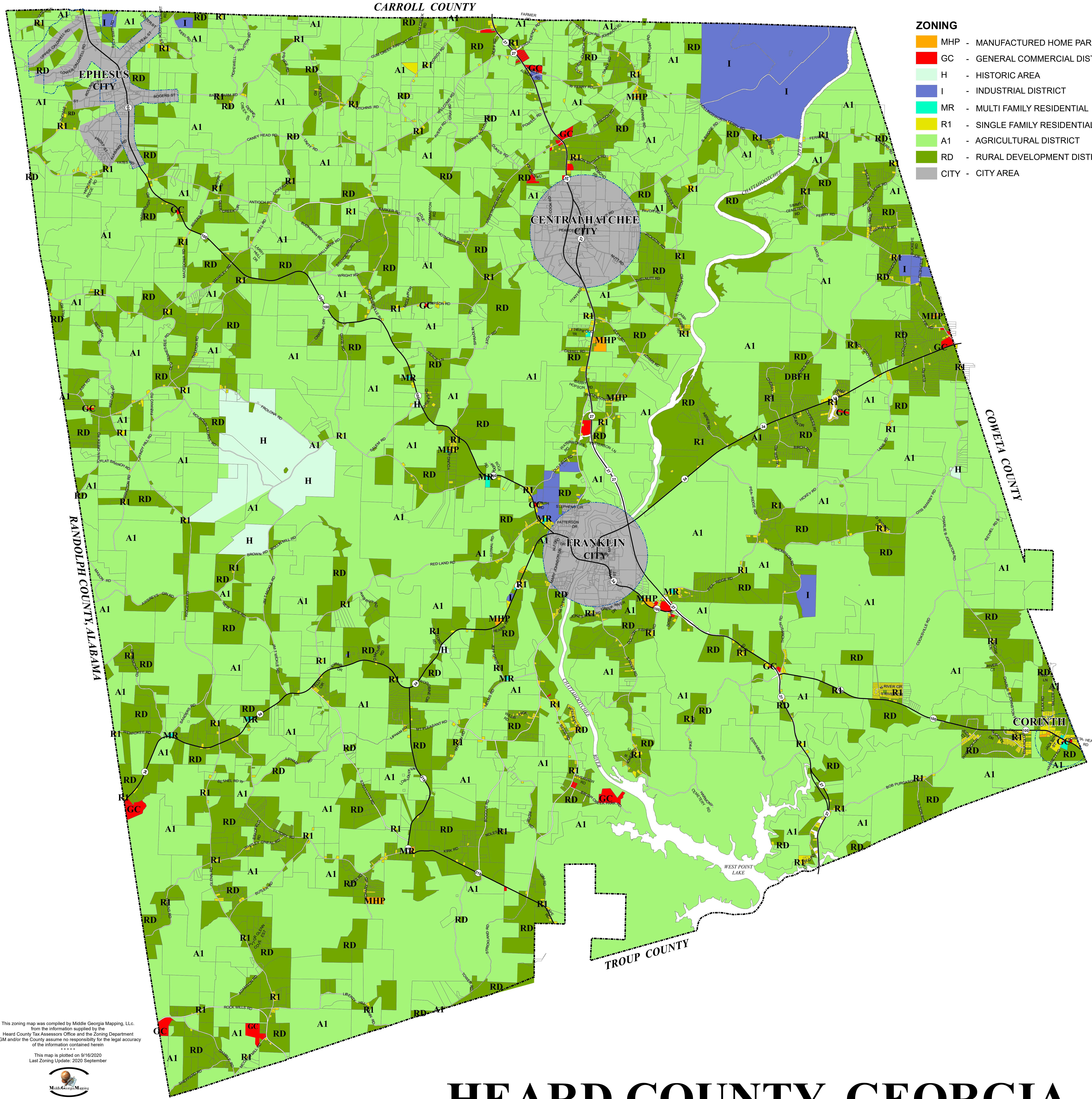


CARROLL COUNTY

- ZONING**
- MHP - MANUFACTURED HOME PARK
  - GC - GENERAL COMMERCIAL DISTRICT
  - H - HISTORIC AREA
  - I - INDUSTRIAL DISTRICT
  - MR - MULTI FAMILY RESIDENTIAL
  - R1 - SINGLE FAMILY RESIDENTIAL
  - A1 - AGRICULTURAL DISTRICT
  - RD - RURAL DEVELOPMENT DISTRICT
  - CITY - CITY AREA



This zoning map was compiled by Middle Georgia Mapping, LLC from the information supplied by the Heard County Tax Assessors Office and the Zoning Department. Middle Georgia Mapping, LLC and the County assume no responsibility for the legal accuracy of the information contained herein.

This map is plotted on 9/16/2020  
Last Zoning Update: 2020 September



# HEARD COUNTY, GEORGIA ZONING MAP

As Made Effective by The Heard County Board Of Commissioners on this date \_\_\_\_\_

County Commission Chairman _____	Date _____
County Clerk _____	Date _____