

101 GLOVER
ROAD
FRANKLIN, GA
30217

Revisions

B. 

Professional Corporation
for the Practice of Architecture
www.gsstj.com

PROJECT NO.	
-------------	--

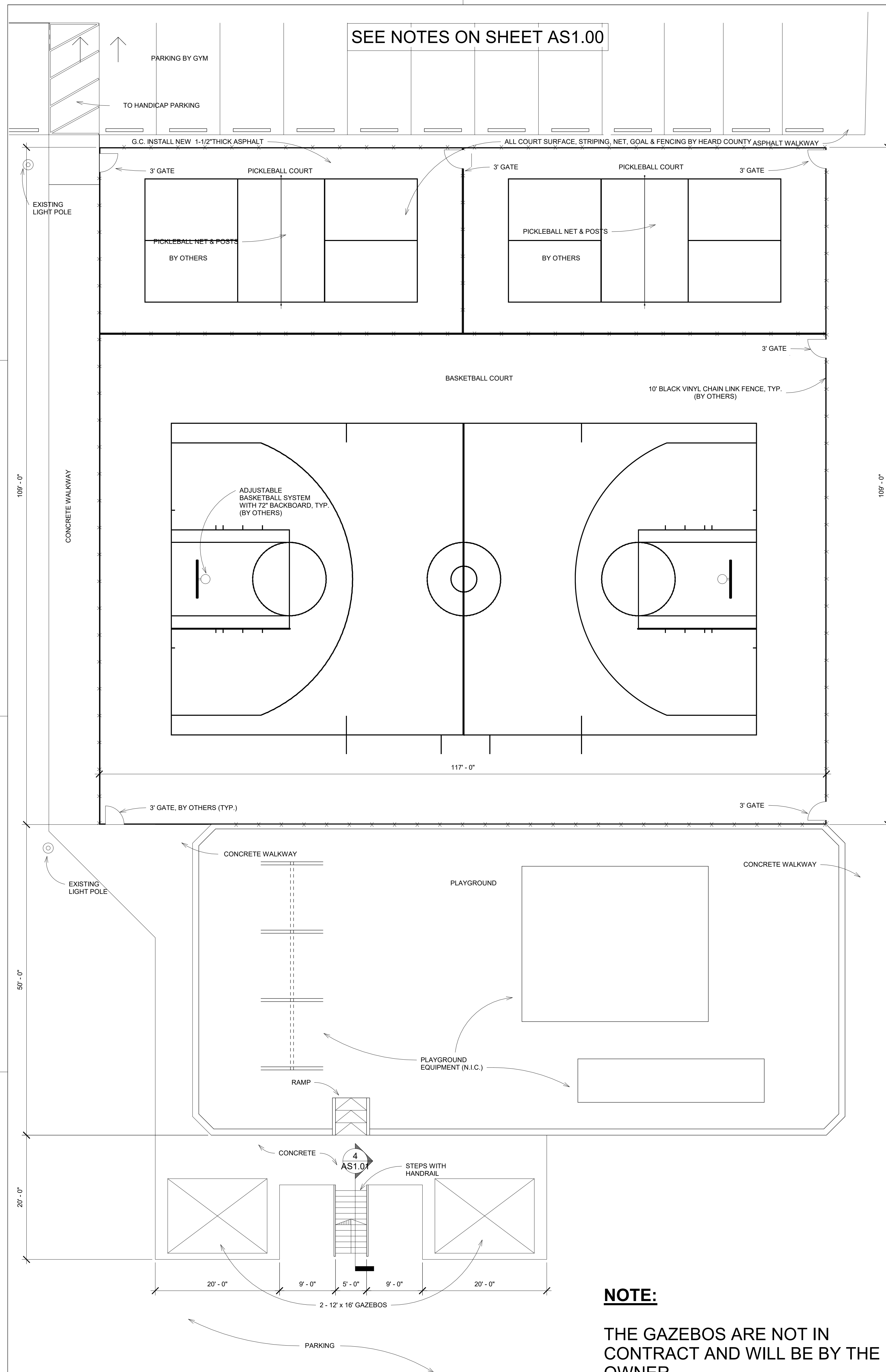
SITE PLAN	SHEET
	TITLE

SHEET NO.

AS1.00

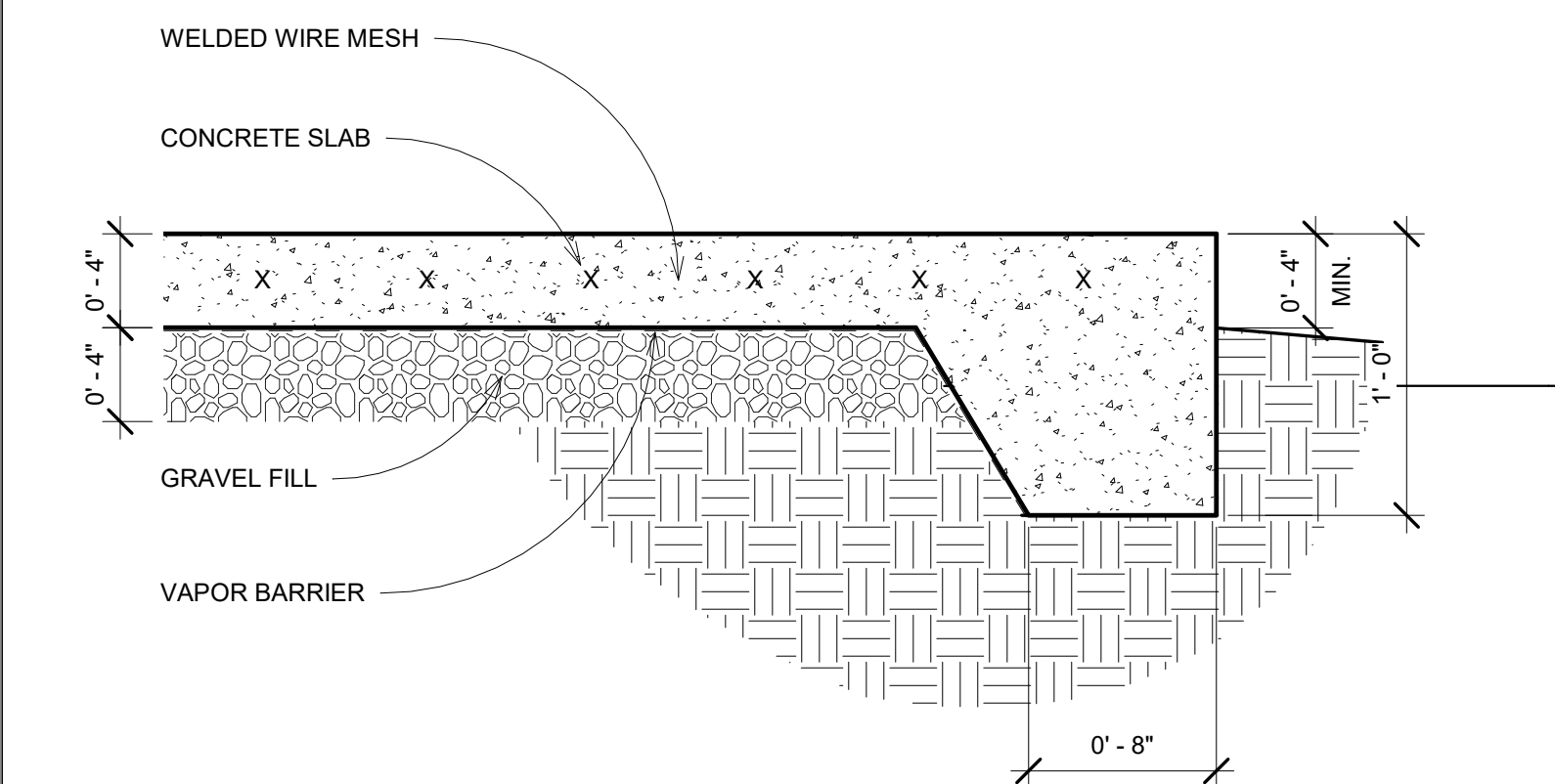
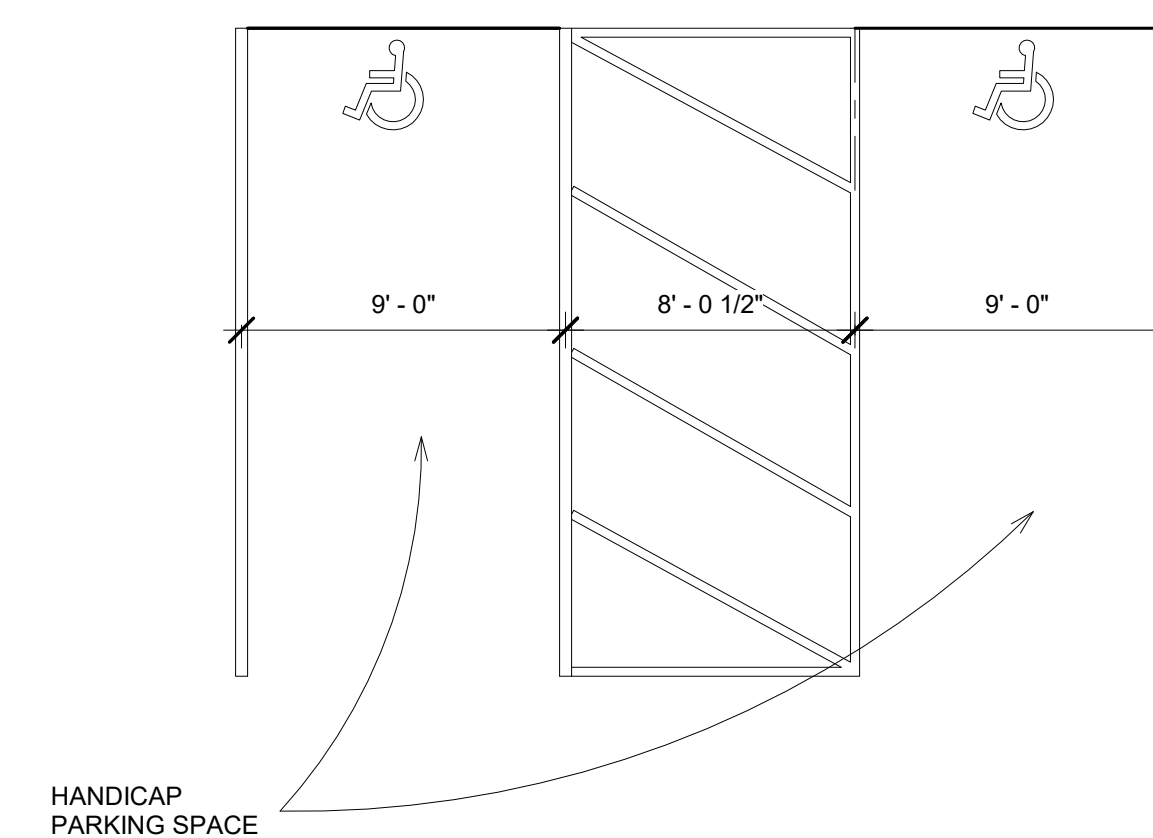


1. ASPHALT BASE LAYER IS EXISTING. INSPECT EXISTING LAYER AND ADD REMAINING LAYERS FOR A FINISHED SURFACE WITH 1 BASKETBALL COURT AND 2 PICKETBALL COURTS. THE FOLLOWING TO BE BY CONTRACTOR: FINISH SURFACE WITH PROPER DRAINAGE, STRIPING, NETS, BASKETBALL GOALS, AND FENCES. LAYOUT PER ENLARGED DRAWING.
2. EXISTING PLAYGROUND EQUIPMENT AND MULCH TO REMAIN. ADD HANDICAP ACCESS AND ADDITIONAL CANOPIES PER ENLARGED DRAWING.
3. SMOOTH OUT GRADE AND GRASS AREA AROUND EXISTING RESTROOMS AS NOTED ON ENLARGED DRAWING.
4. DEMOLISH AND HAUL AWAY THE FOLLOWING INSIDE THE PERIMETER OF THE CONCRETE WALK DESCRIBED IN NOTE 6. FILL ALL HOLES CREATED BY DEMOLITION AND COMPACT FILL. SMOOTH SURFACE AND SEED GRASS TO BLEND OVER DAMAGED AREAS.
 - A. ALL FENCES, EXCEPT AS PER NOTE 11. BACKSTOPS TO BE INCLUDED IN REMOVED FENCES.
 - B. ALL FIELD LIGHT POLES AND ASSOCIATED CONDUITS AND WIRING. FILL HOLES LEFT BY POLES. BLACK ORNAMENTAL LIGHT POLES SHALL REMAIN.
 - C. ALL BASEBALL DUGOUTS AND ASSOCIATED CONSTRUCTION.
 - D. PLAYGROUND EQUIPMENT SHOWN IN NOTE 5.
 - E. REMOVE CROSS TIE WALL AND BENCH AS PER NOTE 12.
 - F. REMOVE MISCELLANEOUS EXPOSED PIPES, RAILS AND OTHER EXPOSED OBJECTS.
5. REMOVE AND HAUL AWAY EXISTING PLAY EQUIPMENT. REPAIR GROUND AND SEED GRASS TO BLEND.
6. CRACK AND GRASS GROWN ENTIRE PERIMETER CONCRETE WALKWAY. SEE SECTION IN DRAWINGS. USE POWER EDGER TO PROVIDE A CLEAN EDGE. pressure WASH ALL CONCRETE ON WALKWAY. PROVIDE A UNIT COST PER LINEAR FOOT TO DEMOLISH AND REPLACE CONCRETE DETERMINED TO BY OWNER TO REQUIRE REPLACEMENT.
7. REMOVE EXISTING CANOPY ON GYMNASIUM. CONSTRUCT A NEW CANOPY PER DRAWINGS.
8. STRIPE 2 ADA COMPLIANT HANDICAP PARKING SPACES PER ENLARGED DRAWING. CONSTRUCT HANDICAP ACCESSIBLE WALKWAY FROM PARKING SPACES TO PLAYGROUND PER ENLARGED DRAWINGS.
9. EXISTING SKATE PARK TO REMAIN.
10. NEW ASPHALT ACCESS ROAD TO RESTROOMS BY OWNER.
11. REPLACE OUTFIELD FENCE ON BASEBALL FIELDS AND WHERE SHOWN WITH SPECIFIED RAIL FENCE.
12. REMOVE BRUSH AND CROSS TIE WALLS. FILL IN DIRT AND COMPACT TO RESTORE SLOPE. SMOOTH GROUND AND SEED GRASS TO BLEND.
13. REMOVE SHED BEHIND BASEBALL BACKSTOP.
14. REMOVE BRUSH AROUND ELECTRICAL TRANSFORMER BOXES. PREPARE SOIL AND SEED GRASS TO BLEND.
15. REMOVE 1 BASKETBALL GOAL IN GYMNASIUM.
16. PAINT GYMNASIUM CMU AND METAL WALLS, DOOR S AND FRAMES. SEE ELEVATIONS.
17. INSTALL NEW CHAIN LINK FENCES AND GATES AROUND COURTS PER SPECIFICATIONS.



NOTE:

THE GAZEBOS ARE NOT IN CONTRACT AND WILL BE BY THE OWNER.

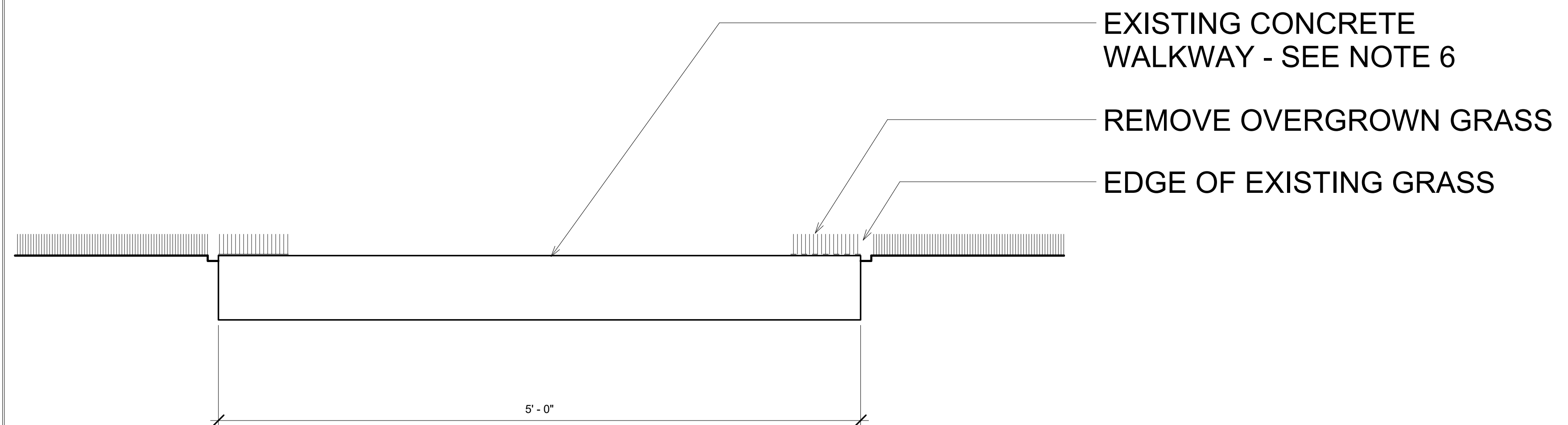


5	HANDICAP PARKING
---	------------------

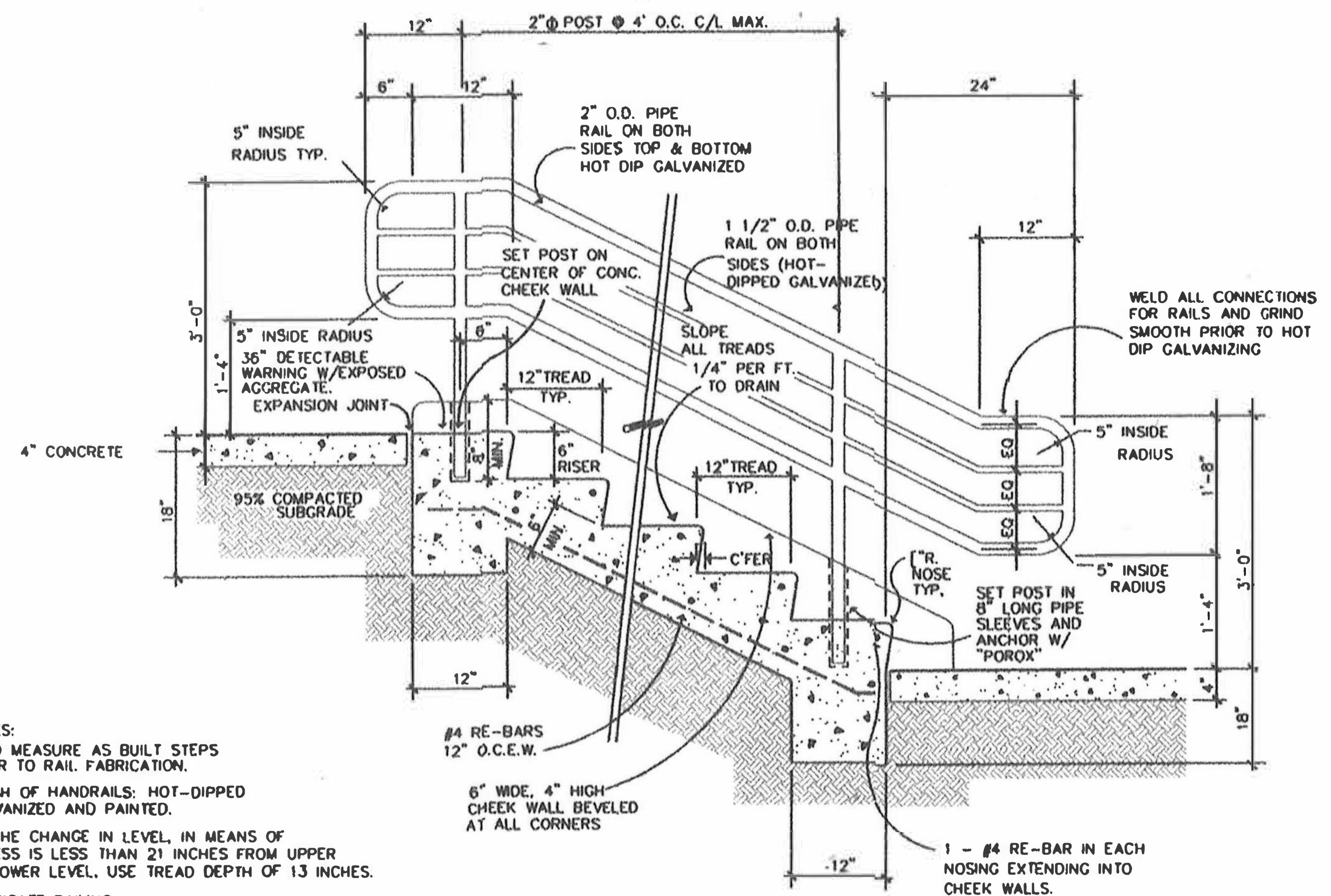
$$3/16'' = 1'-0''$$

2	SLAB SECTION
---	--------------

1 1/2" = 1'-0"



3	SECTION - EXISTING WALKWAY
---	----------------------------

$$1\frac{1}{2}'' = 1'-0''$$


NOTES:

FIELD MEASURE AS BUILT STEPS
PRIOR TO RAIL FABRICATION.

FINISH OF HANDRAILS: HOT-DIPPED GALVANIZED AND PAINTED.

IF THE CHANGE IN LEVEL, IN MEANS OF
EGRESS IS LESS THAN 21 INCHES FROM UPPER
TO LOWER LEVEL, USE TREAD DEPTH OF 13 INCHES.

FABRICATE RAILING
2" (2.72#/FT) & 1 1/2" (2.27#/FT)

STEEL PIPE. (SCHEDULE 40 PIPE)
WELD ALL JOINTS AND GRIND SMOOTH.

4	CONCRETE STAIR
---	----------------

1 1/2" = 1'-0"

HEARD
COUNTY PARK

101 GLOVER
ROAD
FRANKLIN, GA
30217

RELEASED FOR CONSTRUCTION

Revisions

[illegible]

Gardner
Spencer
Smith
Tench &
Jarbeau

A Professional Corporation
for the Practice of Architecture
www.gsstj.com

50 Hurt Plaza SW,
Suite 1100
Atlanta, Georgia
30303
404.522.8805
404.521.2118 (F)

	PROJECT NO.
--	-------------

ENLARGED SITE PLAN		SHEET TITLE
-----------------------	--	----------------

SHEET NO. 4

AS1.01

© 2021—THESE DOCUMENTS REMAIN THE PROPERTY OF THE ARCHITECT AND MAY NOT BE USED OR REPRODUCED WITHOUT WRITTEN PERMISSION.

101 GLOVER
ROAD
FRANKLIN, GA
30217

Revisions

[illegible]

Gardner
Spencer
Smith
Tench &
Jarbeau

Professional Corporation
for the Practice of Architecture
www.gsstj.com

100 Hurt Plaza SW,
Suite 1100
Atlanta, Georgia
30303
404.522.8805
404.521.2118 (F)

PROJECT NO.	
-------------	--

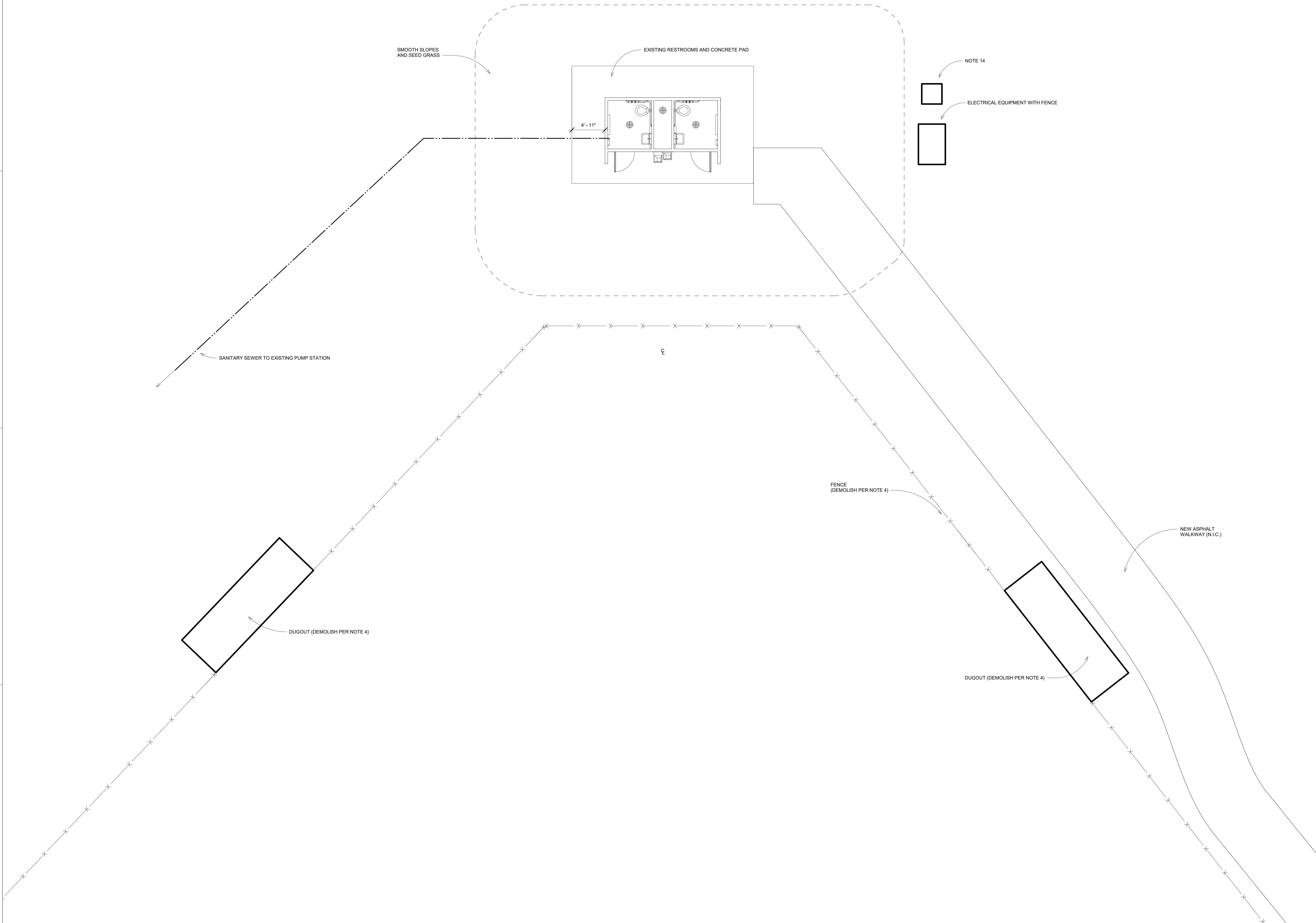
20106

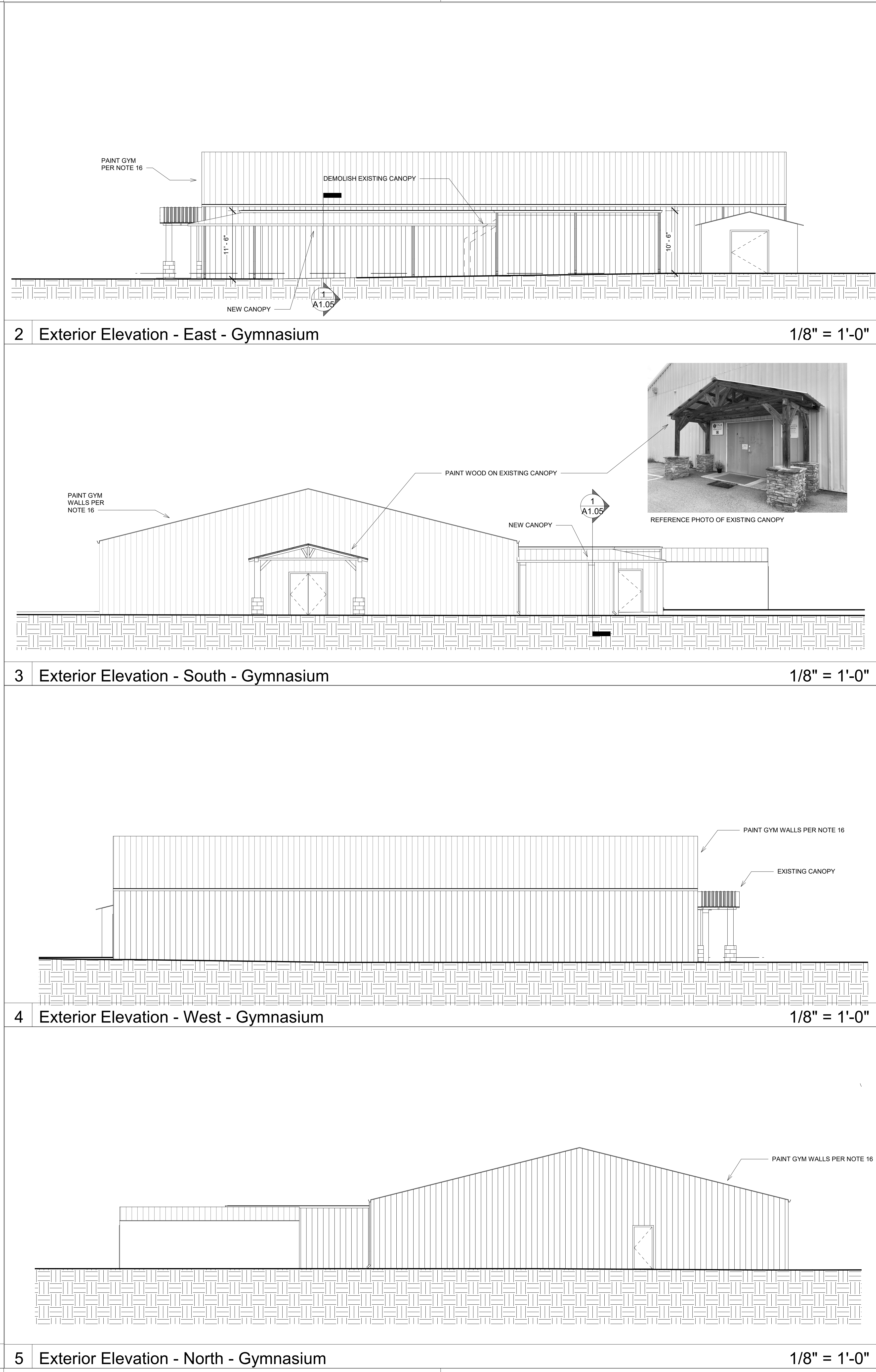
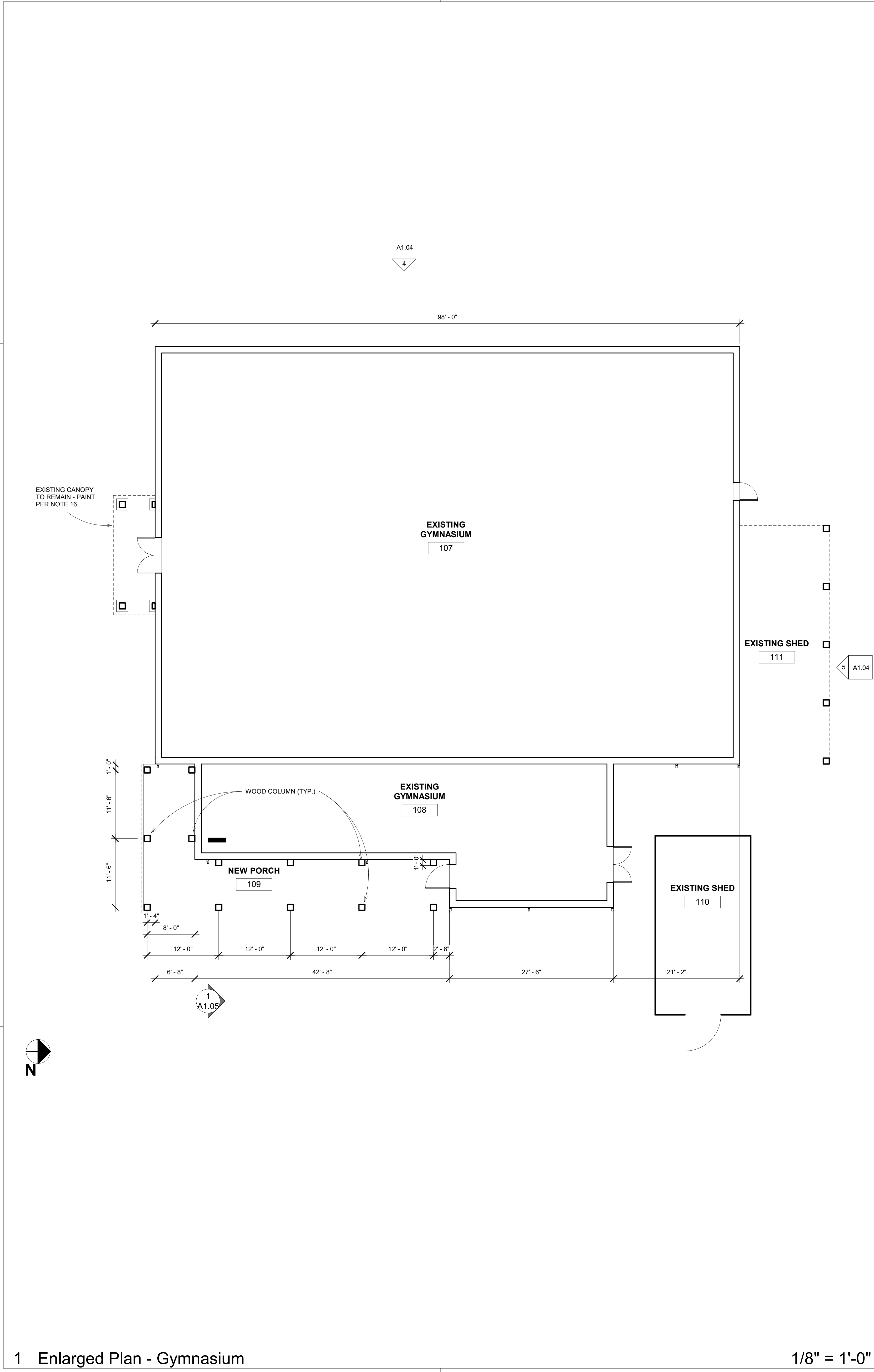
SHEET

ENLARGED SITE PLAN

SHEET

AS1.02





HEARD COUNTY PARK

101 GLOVER ROAD
FRANKLIN, GA 30217

RELEASED FOR CONSTRUCTION

Revisions		
No.	Date	Description
10/13/2022	ISSUE DATE	

Gardner Spencer Smith & Tench & Jarbeau
A Professional Corporation
for the Practice of Architecture
www.gsstj.com

50 Hurt Plaza SW,
Suite 1100
Atlanta, Georgia
30303
404.522.8805
404.521.2118 (F)

PROJECT NO. 20106

SHEET TITLE ENLARGED GYMNASIUM

SHEET NO. A1.04

101 GLOVER
ROAD
FRANKLIN, GA
30217

Revisions	
Date	Description
10/13/2022	ISSUE
	DATE

Gardner
Spencer
Smith
Tench &
Jarbeau

0 Hurt Plaza SW,
Suite 1100
Atlanta, Georgia
0303
04.522.8805
04.521.2118 (F)

SECTIONS	SHEET TITLE
----------	----------------

A1.05

